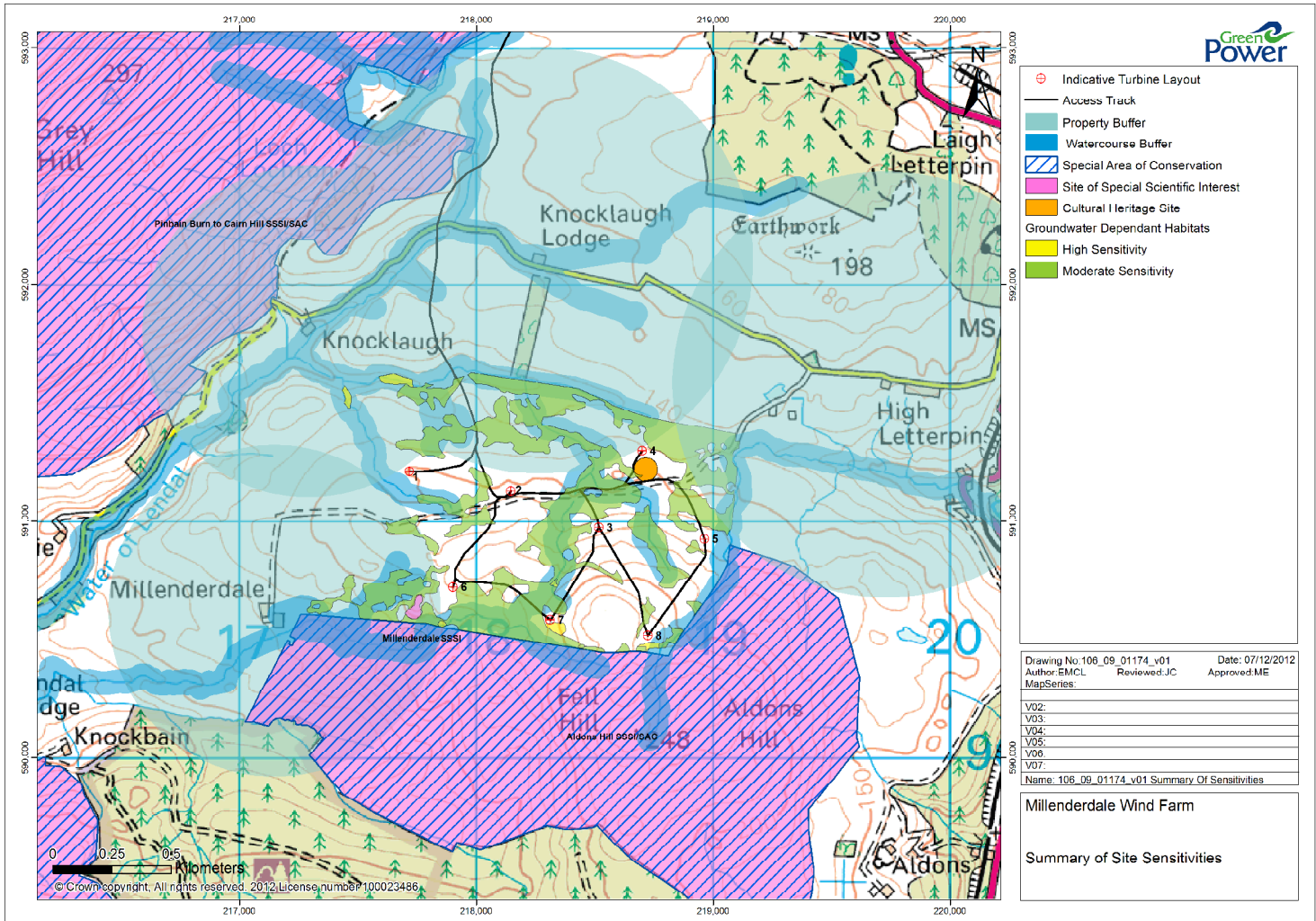


# Layout Considerations



Information has been collected across a range of environmental and technical disciplines, illustrated in the summary of sensitivities plan above.

Principle considerations at Millenderdale are:

- Groundwater dependant habitats
- Nearby designations
- Proximity to houses
- Proximity to watercourses

The final project design will largely be driven by landscape and visual considerations.