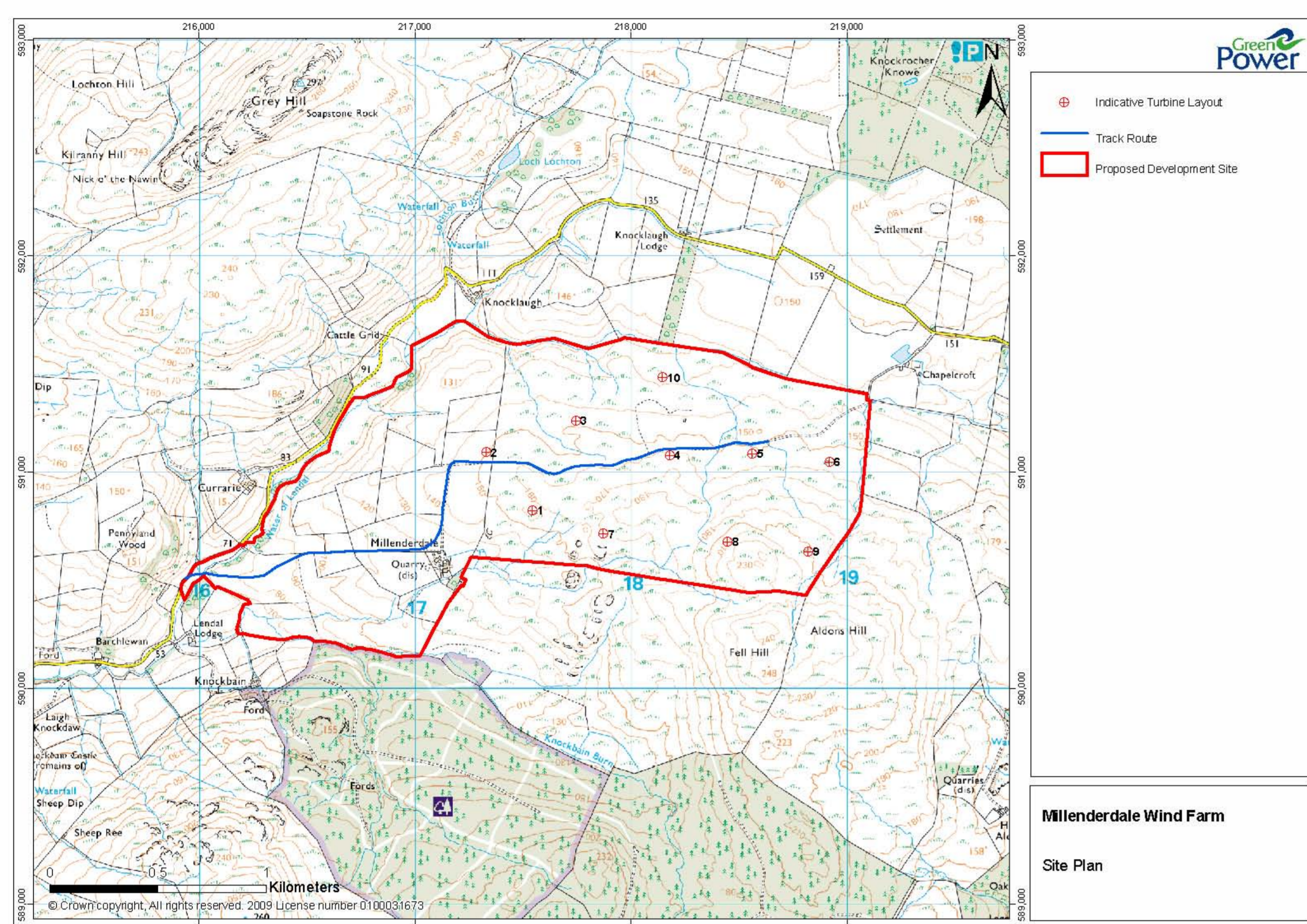
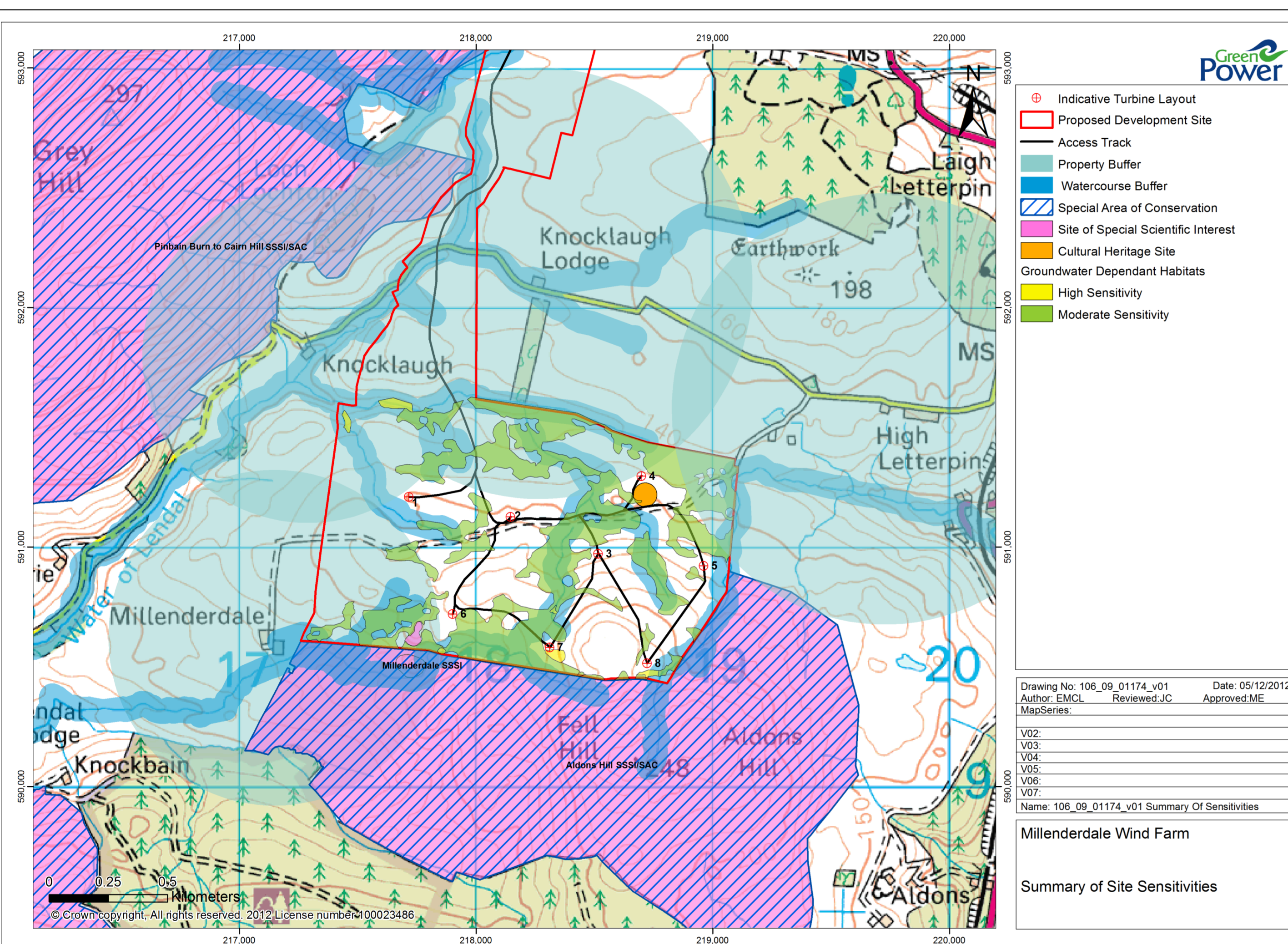


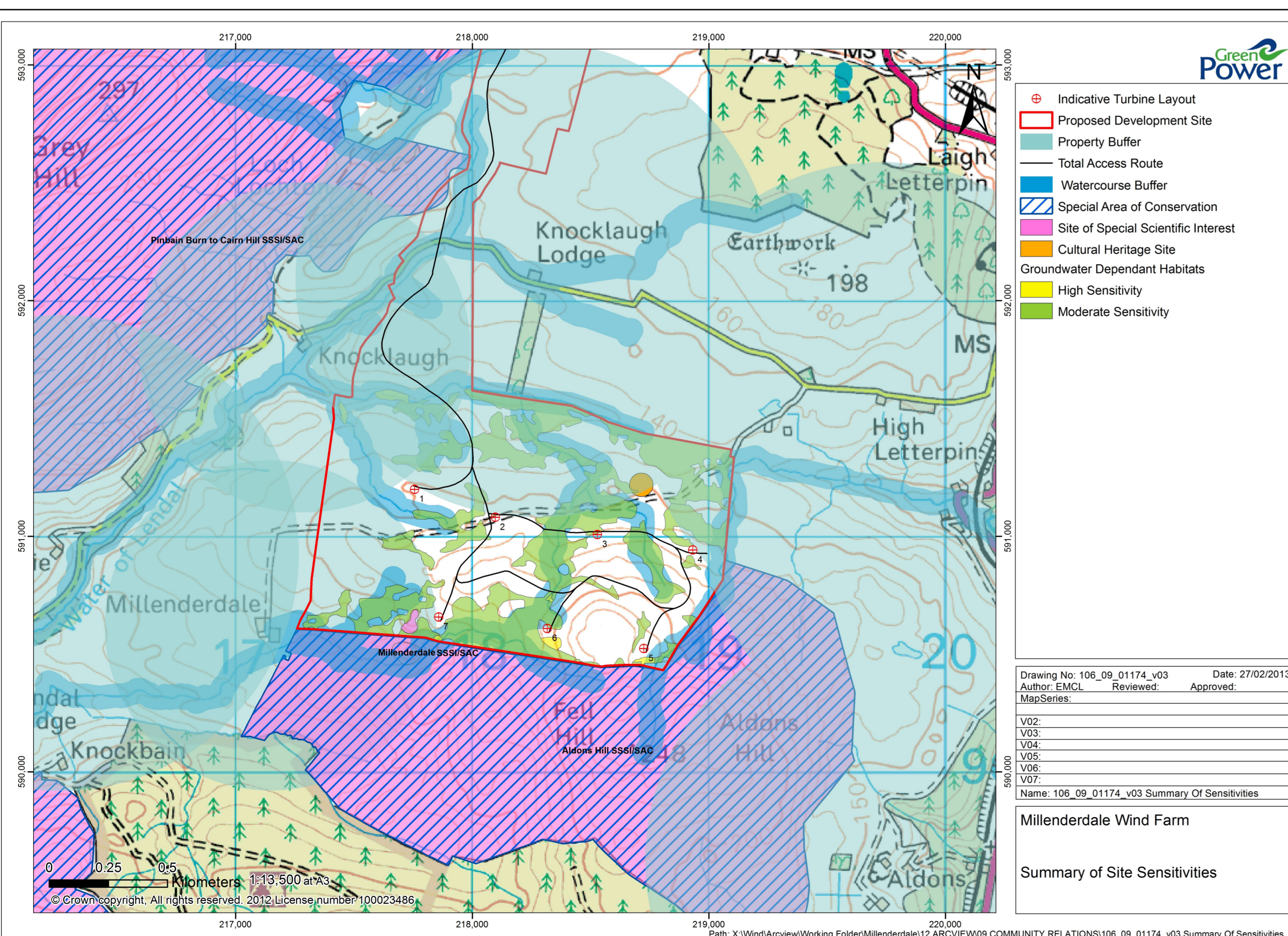
Design Evolution



The original design concept for the site was produced in order to evaluate the maximum size of development. This resulted in a wind farm consisting of 10 turbines each in the 2-3 MW range.



Investigations into relevant technical, environmental and policy considerations led to the development of the design submitted for scoping to South Ayrshire Council in June 2012 and was further consulted on at the Exhibition held in December 2012. This consisted of 8 turbines in the 2-3 MW range and took account of the preliminary findings of the environmental and technical studies and local planning policy.



Feedback from the scoping exercise and public consultation drove the decision to increase the separation between turbines and nearby residents not involved in the Project from 950m to 1010m, resulting in the loss of one of the turbines. Further visual design resulted in the proposed layout presented at the public exhibition in February 2013.